



**GALENICA**

Allied health

**LIST OF PRODUCTS TO ASSIST  
COVID-19 EMERGENCY**

• Phone Number: 15617148687 | E-mail: [sbortone@galenicahealth.com](mailto:sbortone@galenicahealth.com)



# GALENICA

Allied health

The healthcare workers are in constant threat of highly infectious diseases, such as the novel COVID-19. This situation has led to the necessity of using effective Personal Protective Equipment (PPE) which must have efficacy to protect all the healthcare workers, patients, and visitors, so that pandemic could be avoided.

**This Personal protective equipment may include the following products:**

- Disposable 3 layer masks and KN95 masks.
- Protective clothing Tychem/Tyvek.
- Disposable isolation gowns.
- Protective Face Shield.
- Biological protective suits.
- Protective shoe covers.
- Protective plastic aprons.
- PVC rubber boots.

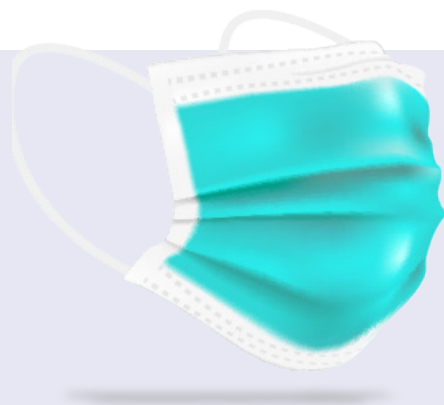
**It is important too to have early detection and diagnostic equipment such as:**

- Infrared thermometer.
- Rapid Test: SARS-CoV2 (COVID-19) IgM/IgG detection method.

**As well sampling instrumentation for the PCR kits, such as:**

- Swab for PCR sample





### 3 Layer Mask

These masks are perfect for the protection of the general population and medical personnel against viruses and other contaminants.

The mask for medical personnel meets technical specifications, such as: EN 14683 Type IIR, EU MDD Directive 2017/745 and EN 1041. The mask for general population meets technical specifications, such as: EN 14683, GB 2626, EN 149, EN 13274 and FDA approval Category I.



### KN95 Mask

Masks KN95 provide the highest protection to the medical personnel, since it filters up to 95% of particles. Meets technical specifications, such as: FDA approval Category II and EN 149.



### Protective clothing

#### Tychem/Tyvek

The Tychem/Tyvek shields against dangerous fine particles, chemical and corporal fluids. Is a versatile material hooded or not hooded that is durable and comfortable, made by a unique nonwoven material with protection built in to the fabric itself, has no films or laminates that can abrade or wear away over time. Color: White. Meets technical specifications, such as: EN 13034, EN 14126, EN 1073, EN 1149, EN 13982, EU PPE Regulation 2016/425, FDA approval category II and EU MDD 93/42/EEC.



### Disposable isolation gowns

After gloves, gowns are identified as the second most used PPE piece in healthcare environment. The gowns made from polyethylene offer protection against fluids due their excellent waterproof performance. Meets technical specifications, such as: EN 20811, EN 13795, EU PPE Regulation 2016/425, EU MDD 93/42/EEC and FDA approval category II.



### Protective Face Shield

Is a optically clear, distortion-free wrap-around face shield. Designed to protect the user against physical particles, chemical splashing or potentially infectious materials, in medical or lab environment. Meets technical specifications, such as: EU PPE Regulation 2016/425, EN 166 and FDA approval.



### Protective shoe covers

It is manufactured by a micro porous non-woven fabric of propylene, laminated to a film of high-density polyethylene. It provides highest protection against particles and chemicals. Meets technical specifications, such as: EN 13795 and EN 14126.



### Biological protective suits

Consists of an impermeable whole-body garment designed to provide protection against direct contact with biological or chemical substances to medical staff working in high-risk environments for chemical and biological. Meets medical specifications.



### Protective glasses with elastic tie

Colorless polycarbonate screen and side ventilation with elastic tie on the sides, panoramic safety glasses, with perforated frame. Meets technical specifications, such as: EN 166 and EU PPE Regulation 2016/425.



### Accordion-type disposable surgical cap

The surgical caps keep hair out of the way during treatments and surgery. Is I made of a non-woven designed for use with doctors and medical practitioners. It promotes hygienic and sanitation practices in a hospital or clinical setting.

---



### Surgical gloves

Latex/nitrile/PVC gloves provide personal protection against unwanted or dangerous substances for medical examinations or handling of contaminated matter. Anatomic and ergonomic glove. Meets technical specifications, such as: EN 374, EN 455, EN 420, EN 1186, ASTM D 6319, ASTM D 5250 and EU MDD 93/42/EEC Category II.

---



### Protective plastic apron

These aprons are perfect for protecting the healthcare workers and all medical personnel against chemical and material particles. Meets medical specifications.

---



### PVC rubber boots

100% Antibacterial/chemical impermeable boots manufacture in PVC + nitrile rubber, with high resistance against animal fat, vegetal oils and blood.

---



## Antibacterial gel

Is a product gentle for the skin, a hand gel quickly and easily coats your hands and has a quick drying formula, with a high alcohol content, leaving your hands crisp and fresh whilst killing 99.9% of germs and bacteria on your hand in seconds. Meets medical specifications.

## List of detection and diagnostic equipment



### Infrared thermometer

The non-touch infrared thermometers are able to scan the temperatures of large crowds and travelers in high risk areas. This is the first small and important step in identification of early signs of infection. Meets medical specifications.



### Decontamination shower

This inflatable decontamination showers include a system of 5 diffusers and 1 area with a manual shower head for areas for difficult access. Uses SIROFLEX coupler connections and GEKA connections for drainage system. Meets medical specifications.





## Rapid test: SARS-CoV2 (COVID-19) IgM/IgG method

The high standard SARS-CoV2(COVID-19)IgG/IgM Detection Test is a rapid chromatographic immunoassay for the qualitative detection of antibodies (IgG and IgM) that uses the colloidal gold for the diagnostic to COVID-19 virus in Whole Blood/Serum/Plasma. The results are available within 10 - 15 minutes and thus, is a rapid detection kit. Meets medical specifications.



## Swab for PCR sample

A specially swab indicated for the collection and transport of samples that contains viruses such as COVID-19. By including antibiotics that inhibit the growth of bacteria and fungi, it ensures the suitability of sample recovery.




# GALENICA

Allied health



4371 Northlake Blvd. Suite #218  
West Palm Beach, FL 33410

 [sbortone@galenicahealth.com](mailto:sbortone@galenicahealth.com)

 15617148687

• Phone Number: 15617148687 | E-mail: [sbortone@galenicahealth.com](mailto:sbortone@galenicahealth.com)